

# Changing a Hearing Aid Battery



## What do I need to know about hearing aid batteries?

Hearing aid batteries come in (at least) four different sizes. Each size is assigned a number and color. No matter where you buy your batteries, the numbers and colors should correspond.

- 312 (or p312) is brown
- 10 is yellow
- 13 is orange
- 675 is blue



Sometimes hearing aids will say what size battery it needs on the door. If yours does not, we likely wrote it on your paperwork when you first bought your hearing aids, but you are always welcome to call us and ask. We have that information in your file. Size 312 and 13 are similar, but the 13 is twice as thick. Size 10 is the smallest, and 675 is the largest.

Hearing aid batteries are air activated. To activate that battery, remove the sticker/tab. Many battery manufacturers recommend letting the battery sit for 2 to 10 minutes before using the battery to ensure long battery life. In a pinch, you can usually use the battery immediately after taking the sticker off.

There is a “right way” and an “upside down” way to put the battery in your hearing aid. In general, the positive (+) side should be up. This is the smooth side. The negative side is “bumpy.”

Most hearing aids are turned on by shutting the battery door. Simply open the door to turn it off.

Hearing aid batteries do not contain mercury, so they are safe to put in the trash can. However, they are toxic enough to cause damage if swallowed by a human or pet. Please be extra careful and keep batteries away from children and pets.

## How do I know if I need to change my battery?

Most hearing aids will play a sound when the battery is getting low. Many times it is two long beeps. In general, hearing aid batteries should last:

- Size 312: 7-10 days
- Size 13: 10-14 days
- Size 10: 3-5 days
- Size 675: 2-3 weeks

If you aren't hearing well, it may be the battery. To check to see if your aids are working:

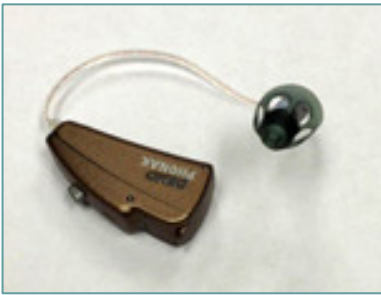
- With your hearing aids on your ears, run your fingers over the top of the aids (behind your ear). If you hear a sandpaper-like sound, then your aids are on, and ok!
- If you do not hear any sounds from your hearing aids, change the battery (described below).
- If you are still not hearing sounds with a new battery, you may need to change the wax trap or clean your slim tube (depending on your hearing aid model). See the tutorial on changing the wax trap or cleaning your slim tube.

Advantage Hearing & Audiology  
(800) 617-HEAR (4327)

(336) 271-4944 (Greensboro), (336) 623-2422 (Eden), (336) 497-5436 (Kernersville)  
[www.advantage-hearing.com](http://www.advantage-hearing.com)

# Changing a Hearing Aid Battery

## Step 1: Find a good location

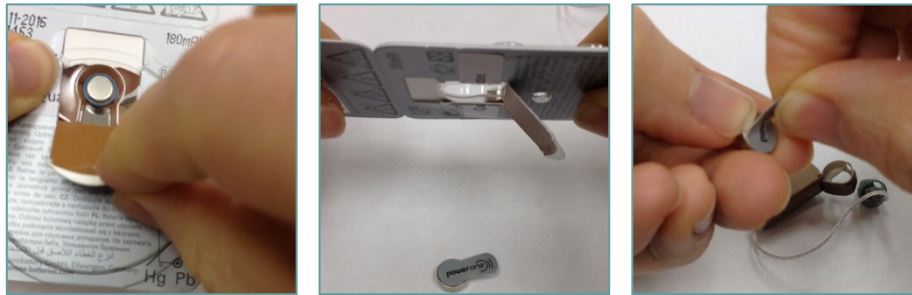


Hearing aids and domes have a tendency to find their way to the floor. Try to find a counter top, desk, couch, or bed that is free of clutter. Ideally find a surface in a contrasting color to your hearing aid, so that if you drop, it, you'll be able to find it.

Also, be aware of the color of the floor – if the hearing aid falls on the floor, you *really* want to find it fast!

## Step 2: Prepare the battery

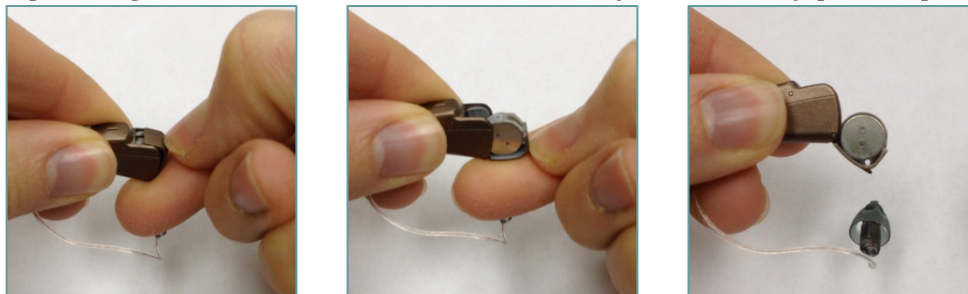
Open the tab on the back of the battery package. Turn the package over, and turn the dial until a battery comes out. Peel the sticker tab off of the battery. You can discard the tab.



Let the battery sit for about 2 minutes, so that the oxygen in the air can activate the battery.

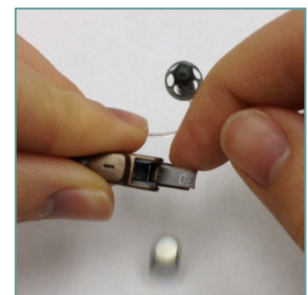
## Step 3: Open the battery door

Using your fingertip or finger nail, find the notch on the battery door. Firmly pull it open.



## Step 4: Remove the old battery

Turn the hearing aid so that the battery can fall out. If it's a newer hearing aid, the battery might be fitting snugly. It's ok to use a small tool (or even a pen!) to tap it out. Try not to mix it up with the new battery!

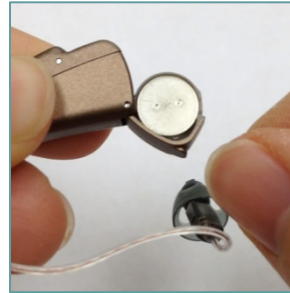
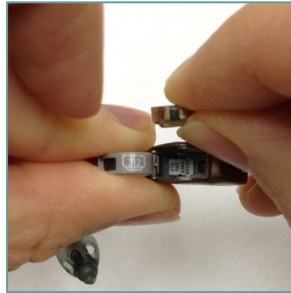


Advantage Hearing & Audiology  
(800) 617-HEAR (4327)

(336) 271-4944 (Greensboro), (336) 623-2422 (Eden), (336) 497-5436 (Kernersville)  
[www.advantage-hearing.com](http://www.advantage-hearing.com)

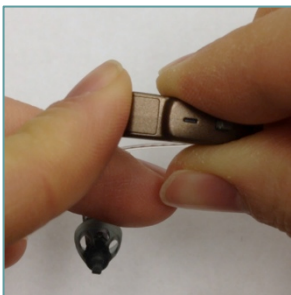
## Step 5: Insert the battery

Insert the new battery. Remember, there is “right way” and an “upside down” way to put the battery in your hearing aid. In general, the positive (+) side should be up. This is the smooth side. The negative side is “bumpy.”

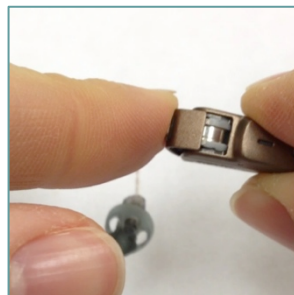
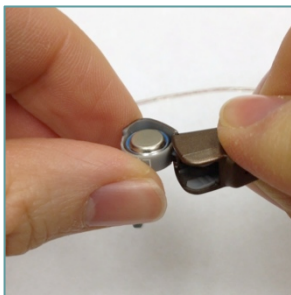


## Step 6: Close the door

Simply close that battery door! If it does not close easily, then the battery may be upside down. Don't force it; instead open the door and check to be sure that the battery is not upside down, or tilted.



Closes easily!



Battery upside down!  
Battery door won't close easily!

## Problems? Questions?

If you have any trouble changing your battery, feel free to call or stop by, and we'd be happy to help you.